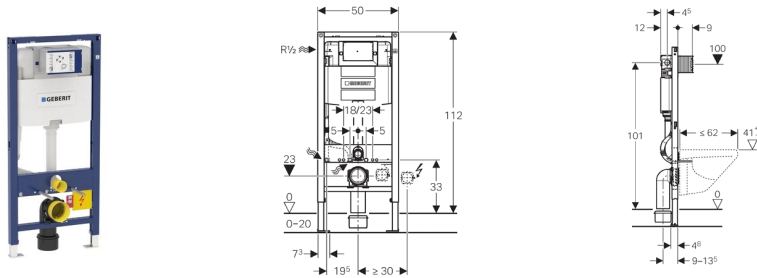


**Geberit Duofix frame for wall-hung WC, H112, with Omega cistern 12 cm**

**Application purpose**

- For installation of a wall-hung WC with bolt fixings set at 180 or 230 mm centres
- For installation in a room-height Duofix system wall in front of a solid or drywall construction
- For mounting in front of a solid or drywall construction
- For a screed of 0-200 mm (not in room height applications)
- For connecting Geberit AquaClean
- Any boarding must be fixed tight up against the face of the Duofix frame and screwed directly to the frame.

**Characteristics**

- Self-supporting
- Frame with C profile 40/40 mm
- Powder-coated frame, ultramarine blue
- Galvanised leg supports, steplessly adjustable 0-200 mm
- Feet can be retracted 5 cm
- Rotating foot plate, for installation in UW50 profiles
- Frame with holes  $\varnothing$  9 mm for fastening in wood frame construction
- Water supply connection back or left
- Tool-free fastening for outlet bend, sound-absorbing, adjustable in depth with 8 positions, adjustable range 45 mm
- The protection cover protects the service opening against moisture and dirt and can be mounted without tools and cut to length
- Universal water supply connection compatible with MeplaFix, can be mounted and operated without tools
- Self-locking feet for tool-free alignment of the frame, (friction feet have to be locked with spanner)
- Sound-absorbing actuator rods, tool-free, fast adjustment
- Frame height 1080 mm
- With wall anchors to allow up to a 200 mm duct. For larger ducts up to 400 mm use extension bolts 111.887.00.1
- Geberit Omega concealed cistern 12 cm with front actuation
- Dual flush with Omega flush plates
- Dual flush with pneumatic buttons
- Single flush with pneumatic buttons
- Connection hose to angle stop valve can be screw-connected by hand
- For pans with contact surfaces smaller than 170 mm (see accessory 111.847.00.1)
- Flush valve features 6 l and 4.5 l flush settings to enable either a 6 l and 3 l flush or a 4.5 l and 3 l flush.  
Note: must be used with pans designed for low volume flush.
- The cistern can be operated with used water (rainwater) provided it is passed through a filter system first.

**Technical data**

Flow pressure range	0.1-10 bar
Operating temperature water max.	25 °C
Flush volume factory setting	5.8 and 3 l
Flush volume small range	2.6-4 l

## Scope of delivery

- 2 Duofix PreWall brackets for system
- Water supply connection, R 1/2", compatible with MeplaFix, with integrated angle stop valve and hand wheel
- Protection housing for service opening
- Two protection plugs
- WC connection set,  $\varnothing$  90 mm
- WC outlet bend, HDPE,  $\varnothing$  90 mm
- Adaptor sleeve, HDPE,  $\varnothing$  90/110 mm
- 2 threaded rods M12
- Fastening material

Excluded:

- Flush plate

## Article

Article no.	PU1
111.061.00.1	1

- Preferential discount terms on the Geberit Omega range are available to those who display the product. Please contact your local Area Sales Manager for further information.