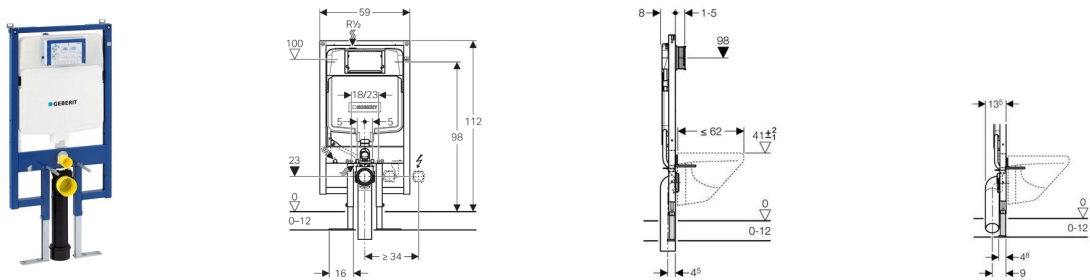


Geberit Duofix frame for wall-hung WC, H112, with Sigma cistern 8 cm



Application purpose

- For installation of a wall-hung WC with bolt fixings set at 180 or 230 mm centres
- For installation in a room-height Duofix system wall in front of a solid or drywall construction
- For installing in a load bearing stud wall
- For installation in split-height PreWall construction in front of a solid or drywall construction
- For installation in room-height PreWall or partition wall
- For connecting Geberit AquaClean
- Any boarding must be fixed tight up against the face of the Duofix frame and screwed directly to the frame.

Characteristics

- Installation depth of 80-110mm (drainage dependant)
- Self-supporting
- Frame height 1120 mm
- M12 fastening for ceramic appliances, fastening distance 18 cm or 23 cm
- Front actuation only
- Concealed cistern fully insulated against condensation
- Water supply connection at the top, offset to the left side
- Universal water supply connection compatible with MeplaFix, can be mounted and operated without tools
- Connection hose to angle stop valve can be screwed without tools
- Sound-absorbing actuator rods, tool-free, fast adjustment
- Easy to clean coating on glass and metal
- Single flush with Sigma10, or Tango flush plates
- Dual flush with Sigma80 touchless, Sigma60, Sigma50, Sigma20, Sigma10 touchless, Sigma01 or Bolero flush plates
- Adjustable flushing volume
- Not suitable for use with flush buttons
- The protection cover protects the service opening against moisture and dirt and can be mounted without tools and cut to length
- Outlet bend depth with vertical connection 9 cm
- Fastening for outlet bend adjustable in depth and sound-absorbing
- Installation depth at least 8 cm with vertical drainage connection (please note side drainage increases installation depth, see diagram above)
- Frame with C profile 40/40 mm
- Powder-coated frame, ultramarine blue
- Feet galvanised, adjustable 0-12 cm
- Self-locking feet for tool-free alignment of the frame, (friction feet have to be locked with spanner)
- For pans with contact surfaces smaller than 170 mm (see accessory 111.847.00.1)
- The cistern can be operated with used water (rainwater) provided it is passed through a filter system first.

Technical data

Flow pressure range	0.1-10 bar
Operating temperature water max.	25 °C
Flush volume factory setting	5.8 and 3 l

Scope of delivery

- Water supply connection R 1/2" male BSP parallel thread with integrated angle stop valve and hand wheel
- Two protection plugs
- Protection housing for service opening
- Flush bend
- 2 threaded rods M12 for ceramics fastening
- WC connection set, ø 90 mm
- WC outlet bend, PE-HD, ø 90 mm, extended
- Adaptor sleeve, HDPE, ø 90/110 mm
- Conduit pipe for the water supply connection of Geberit AquaClean
- 2 PreWall brackets
- Fastening material

Excluded:

- Flush plate

Article

Article no.	PU1	PU4
111.729.00.1	1	12