

KUDOS

REFRESHING INNOVATION IN SHOWERS

ORIGINAL RANGE 1400/1500/1700 BI-SLIDER Installation Instructions

Please read these instructions before installing, as incorrect fitting will invalidate the guarantee. Carry out each stage before moving onto the next. **Do not dispose of packaging**, no claims for damaged or missing parts will be accepted if the packaging has been disposed of. If you are unsure about these instructions please contact Kudos Shower Products:
Customer Service Helpline: 01539 564040

TOOLS REQUIRED

- Flat-Headed Screwdriver
- Pozi-Drive Screwdriver
- Spirit Level
- Tape Measure
- Silicone Sealant
- 4mm & 2.5mm Allen Key (Supplied)
- Electric Drill
- 7mm Drill Bit (Masonry)

KEY STAGES

- Decide handing of the door
- Assemble the frame work
- Remove the clip -in extrusions
- Position and level the frame work in situ
- Drill walls and fix frame work
- Fit the fixed panel
- Fit the sliding door
- Silicone seal the enclosure

IMPORTANT

Check appearance of shower enclosure - any defects must be reported to Kudos Shower Products before assembly/installation. Claims for imperfections will only be accepted prior to assembly/installation

Any claims made under the terms of the Lifetime Guarantee must be reported to Kudos within 21 days of the fault occurring

Check the enclosure adjustment sizes are suitable for your installation

Ensure the top of shower tray is level **in all** directions

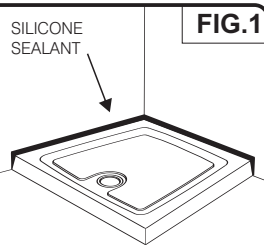
Prior to tiling, any gap or crevice between the rim of the tray and the wall must be filled with silicone sealant flush with the rim of the tray - **see Fig.1**

Waterproof the walls using ceramic tiles/shower panels etc. before installation of the shower enclosure

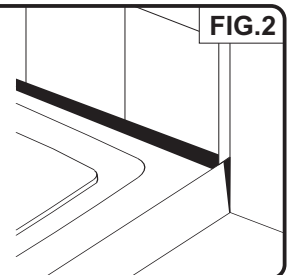
Fully seal between tiles/shower panels and the tray **BEFORE installing the enclosure - see Fig.2**

Use care when drilling into the walls to avoid hidden pipes or electric cables

Once the tray is installed but **before** the tiles are fitted any crevice between the tray and the walls **must** be filled with silicone sealant flush with the top of the tray.



Once the walls have been tiled but **before** the enclosure is installed, the tiles **must** be silicone sealed to the tray all of the way around in one continuous bead.



CLEANING

GENERAL - for the frame work and fixings use only warm soapy water and damp cloth/ sponge on a regular basis. After cleaning please rinse with clean water to remove any residue.

Do not use abrasive scouring powders, chemicals or aerosol cleaners - these may result in damage to the surfaces, in particular, the plated component parts. **See instruction below for glass cleaning advice.**

LIFESHIELD

Your Kudos Product is pre-treated with Life Shield on the inside surfaces only. While this makes cleaning the glass a lot easier and helps prevent the build up of harmful lime-scale and soap deposits the glass still needs to be maintained on a regular basis. We recommend the use of a detergent and aroma free glass cleaner (A 50/50 mix of Vinegar and Water works well!!!) Strong detergents and abrasives can damage the coating.

DO NOT use abrasive cleaners or abrasive scrubbing equipment for cleaning!!

DO use a squeegee to remove remaining droplets of water from glass after showering, any build up of residue can be removed easily using an appropriate cleaner and agitation from soft cleaning equipment

THESE INSTRUCTIONS TO BE LEFT WITH THE CUSTOMER

1 BEFORE BEGINNING THIS INSTALLATION PLEASE:

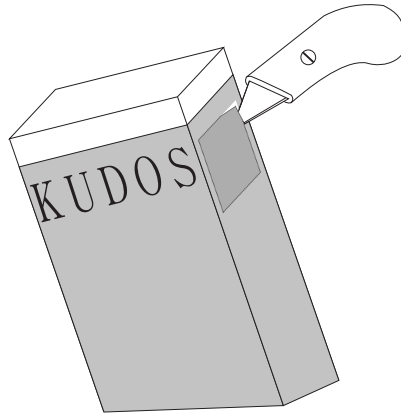
- Ensure you have read and understood these instructions
- Check that the tray has been silicone sealed as instructed
- Check all of the frame work and glass for visible signs of damage
- Decide on the handing of the shower enclosure
- Check that the enclosure is of the correct size to suit the installation
- Be sure that you have all the required tools to complete the job

If you need to report a fault you must do so BEFORE installation.

If there is anything you are not sure about then please call the Kudos Helpline

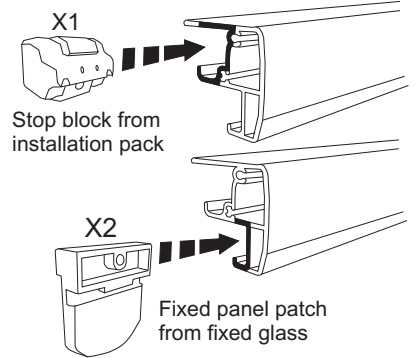
2

Cut out each end of the end wraps where shown. These will help with the assembly of the enclosure. If you have help then these may not be necessary.



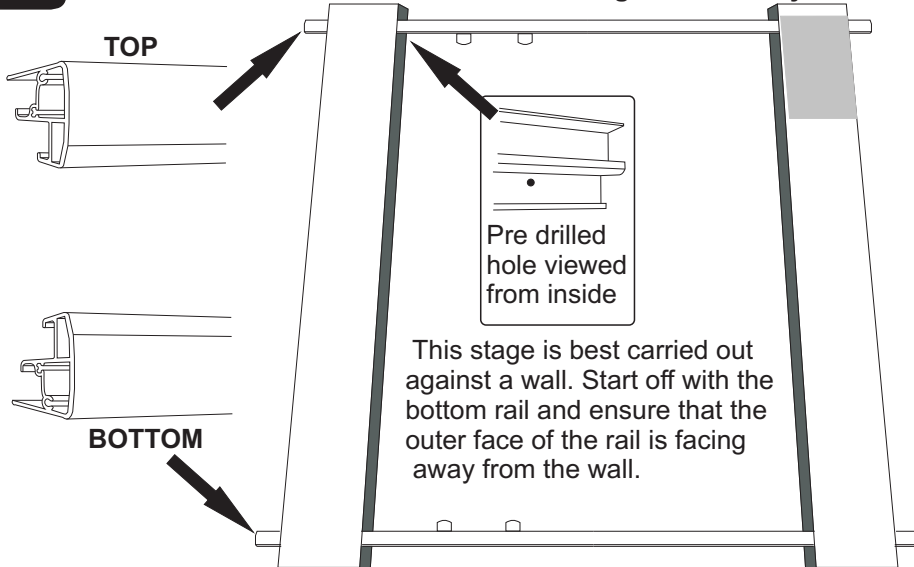
3

Remove the fixed panel patches from the fixed glass (glass without handle) by removing the allen key screws. Keep the inner patch covers safe. Slide x1 Stop Block into each rail as shown, and then x2 Fixed Panel Patches into each rail as shown. You do not need to secure these fixings into the rail at this stage.



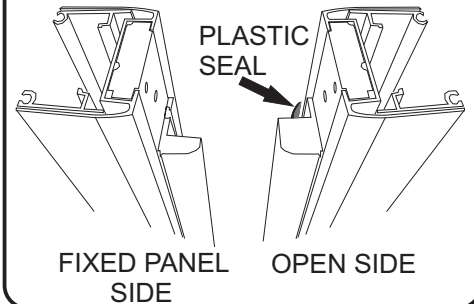
4

To help with assembly insert the rails into end wraps as shown. The rails are handed, the fixed panel end can be identified by the pre drilled hole at the end. These instructions show a **Right Hand Entry**



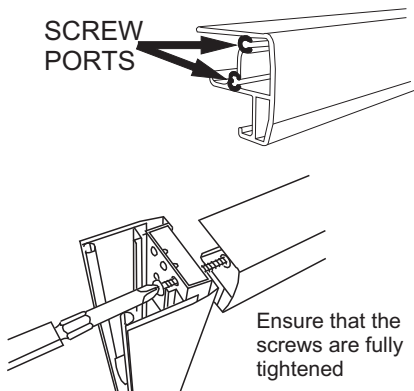
5

Identify both wall posts. The wall post with the plastic flipper seal as shown will be the opening side of the enclosure, the one without the seal will be the fixed panel side. Please ensure that the wall post **without** the flipper seal is to go to the end of the rails with the pre drilled hole as shown in stage 4.



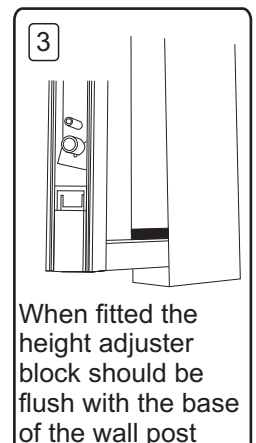
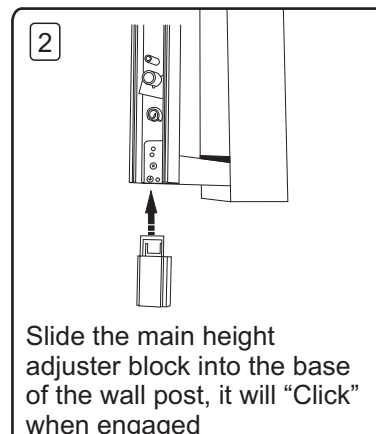
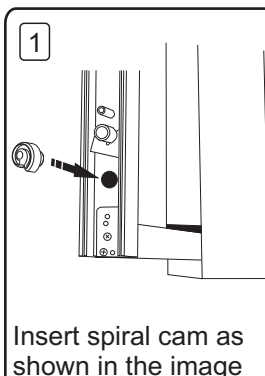
6

Secure the wall posts to the rails using the X8 No.6x30PH screws from the screw Assembly Pack. Please ensure that each screw locates into the relevant screw port in the rail as shown. We recommend that you start with the top rail.

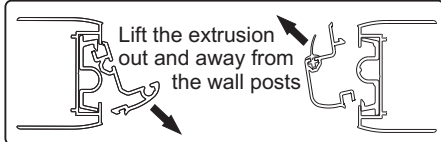
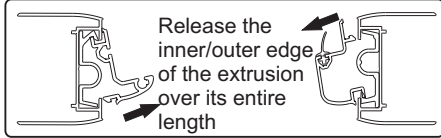
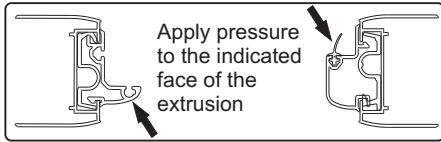


7

Insert the height adjustment blocks into the base of the wall posts as shown. You will need to lift the wall post slightly to allow space to fit the height adjustment block.



8 Carefully tear off the side wraps and discard. Then remove the extrusions as shown below.

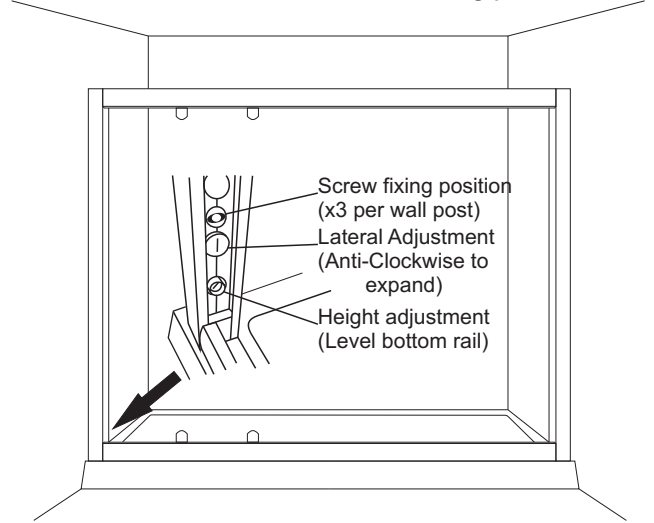


IF USING A SIDE PANEL PLEASE REFER TO SIDE PANEL INSTRUCTIONS AFTER THIS STAGE

9 Position onto the tray, Expand frame equally into the opening using the x3 lateral adjustments on each wall post so that the frame wedges into place. Level the bottom rail if required using the height adjustment. Level the frame work to the wall and mark the screw fixing positions.

TIP Ensure the framework is level vertically and horizontally using a spirit level

TIP To mark the screw fixing positions dip the end of a drill bit into some shoe polish



10 CAREFULLY REMOVE THE FRAME FROM THE TRAY

1 Once the enclosure is removed drill holes into the walls using a 7mm Drill Bit, CHECK FOR PIPES AND CABLES

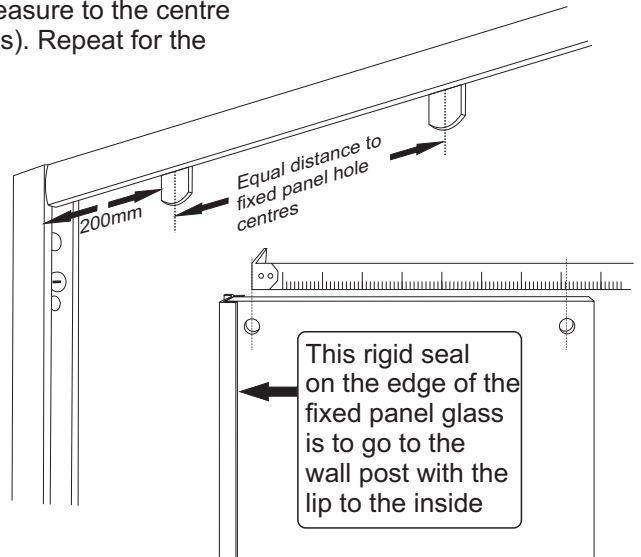
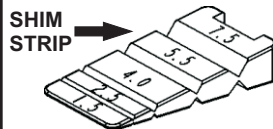
2 Insert wall plugs or fixings suitable for your walls. Then secure frame to wall using X6 No.8x30 PH screws supplied

3 Level door frame using adjustments shown in stage 9, ensure the wall posts are straight and not bowed out in the middle from over tightening the middle adjustment screws.

11 Measure the centres of the holes in the fixed panel, once done position the patch closest to the wall post 200mm away from the post, then space the second patch the equal distance from this to the fixed panel holes (measure to the centre of the fixed panel patches). Repeat for the patches at the bottom.

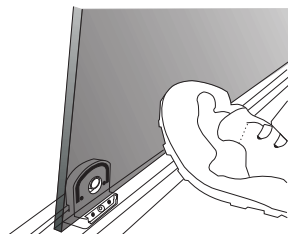
IMPORTANT

Before fitting the fixed panel glass, ensure that the Shim Strip is placed between the bottom rail and the tray half way along it's length, this will support the weight of the glass and prevent the bottom rail bowing



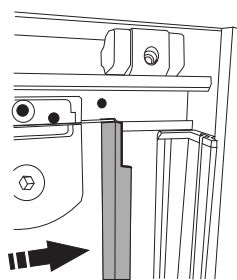
12 Carefully lift fixed glass panel into the enclosure and secure to fixed panel patches. Make sure you have the 4mm Allen key & inner patch covers to hand. Ensure the rigid seal is to the wall post with the Life Shield treated surface to the inside.

Place fixed glass onto the bottom patches and hold firm with your foot. Push the top of glass onto locating holes in top patches and re-fit the inner patch covers. Repeat for the bottom patches.

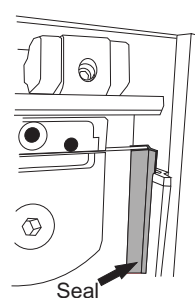


13 Re-fit the extrusions by reversing the procedure in stage "8" Slide fixed panel back to the fixed side wall post, ensure lip of seal fully locates into the groove in the extrusion. Once secured ensure all allen screws are fully tightened.

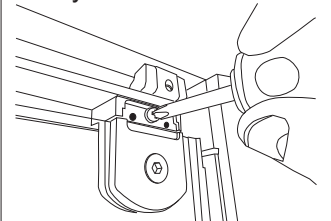
1 Slide the fixed panel up to the wall post, slightly loosening the allen key screws may make this easier



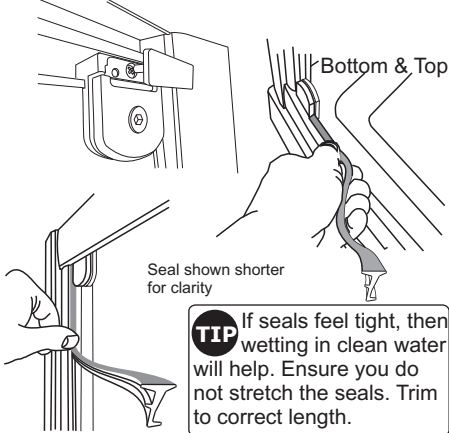
2 Ensure the lip on the rigid seal locates into the extrusion over it's full length



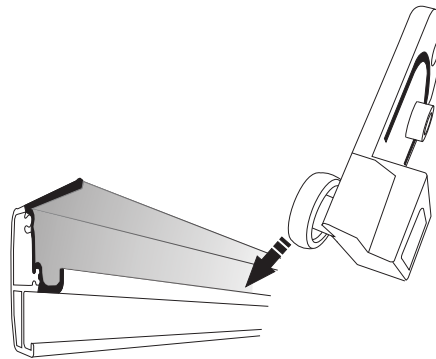
3 Using X4 6x20PH screws secure the patches into the pre drilled holes, if the holes do not line up loosen the allen key screw and move patch on glass to align, re-tighten all allen key screws.



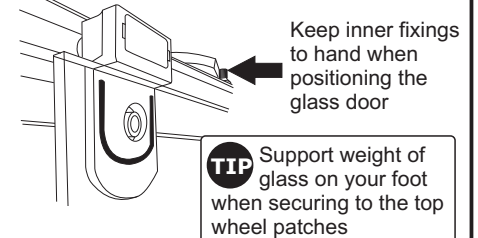
14 Insert glazing seals as shown, around the **outside** of the fixed panel. Also at this stage fit the inner fixed patch covers as shown, you will not be able to fit all of these once the door glass is installed.



15 Remove the wheel patch fixings from the door glass using the 4mm allen key supplied. Sit these patch fittings into **TOP** rail upside down then turn the right way around to lock them into the rail.

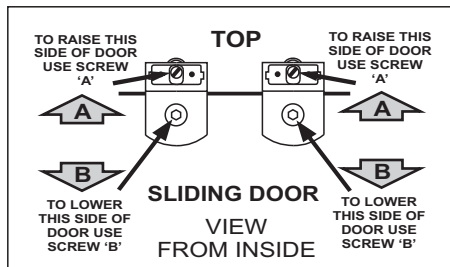


16 Carefully feed the glass into the unit and match up the top holes with the wheel patches. Screw the inner cover back on. Ensure the shoulders of the patch fittings are tight against the top edge of the glass. If the handing of the door glass is being changed then you will need to remove the quick release patches and splash seal and ensure they are to the bottom of the door with the levers pointing towards each other.



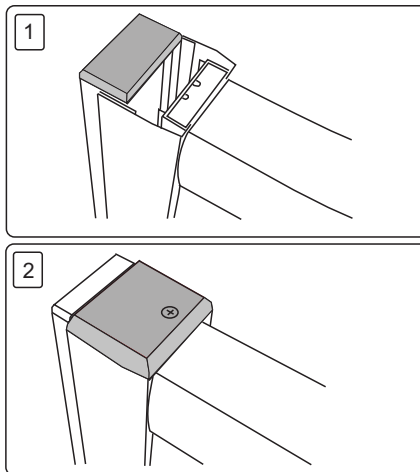
17 Adjust the hanging of the door so that the closing edge of the glass meets the closing seal evenly over its entire height. Gain access to screw "A" by removing the top patch cover.

PLEASE ENSURE THAT AFTER ADJUSTMENT ALL SCREWS ARE FULLY TIGHTENED

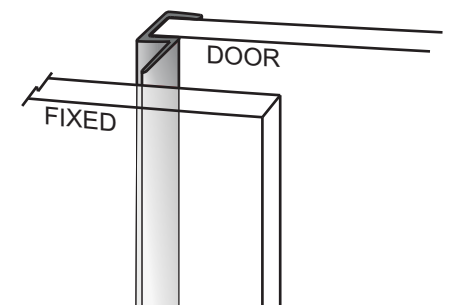


- A** Roller bearing adjustment- using screwdriver, loosen screw (do not remove), re-position in slot and re-tighten.
- B** Patch fitting adjustment- using allen key, loosen screw (do not remove), lower glass and re-tighten.

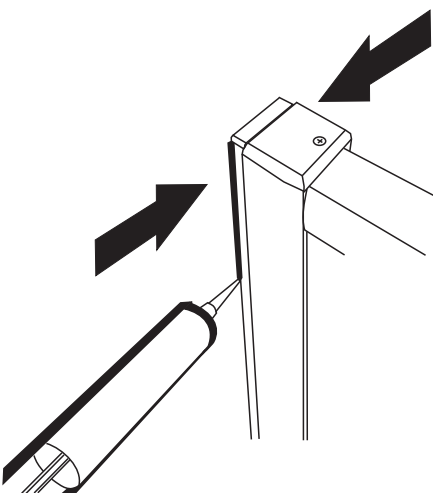
18 FIT COVER CAPS, to all patch fittings and each wallpost. Secure wallpost cover caps using No.4 x 10mm long screws provided.



19 FIT VERTICAL DOOR seal onto the opposite edge of the sliding door to the handle. Position stop blocks to prevent the handle of sliding door impacting on edge of fixed panel, then tighten allen key grub screws with 2.5mm Allen Key.

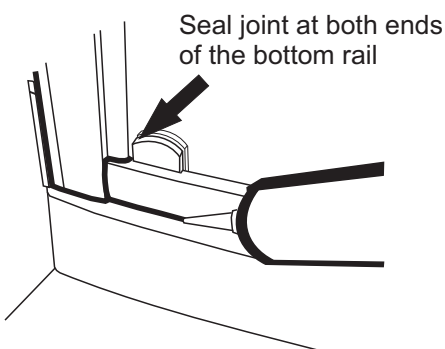


20 Silicone seal the wallposts. Both wallposts should be sealed vertically to the tiled / panelled walls on the **Outside & Inside** of the enclosure.



21 Silicone seal the enclosure to the tray on the **outside only**. You should also seal the joint as shown.

IMPORTANT!! Do not seal to the tray on the inside, this will prevent drainage of the frame work and will cause leakage problems



- Check the running of the door, vasaline can be applied to the bottom track to improve the sliding action
- Check that the shim strip has been installed under the bottom rail
- Check that all the screws and fittings are fully tightened
- Ensure that the quick release levers are to the bottom of the door
- Leave for 24hrs before use to allow silicone sealant to cure