

THIS SIDE PANEL CAN BE FITTED TO THE FOLLOWING DOORS

800mm BOWED PIVOT DOOR
900mm BOWED PIVOT DOOR

1200mm BOWED PIVOT-WIDE DOOR
1200mm BOWED SLIDER DOOR

Please read these instructions before installing, as incorrect fitting will invalidate the guarantee—carry out each stage before moving onto the next.

These instructions are to be read in conjunction with the door instructions.

If you are unsure about these instructions please contact Kudos Shower Products:

Customer Service Helpline: 01539 564040

KEY STAGES TO INSTALLATION

- 1 Hand panel (if necessary) to suit your installation
- 2 Fix panel to door
- 3 Position and mark unit onto tray
- 4 Fix wall channel to wall
- 5 Fix panel to wall channel
- 6 Fit all cover caps
- 7 Silicone seal unit to tray and walls



Panel fitted to right hand side



Panel fitted to left hand side

① CONTENTS, carefully remove unit, fixing packs and installation instructions from packaging.

② HANDING, this panel can be fitted to either side of the door. Simply turn panel upside down, if necessary, to suit your installation.

③ COMPLETE initial stages of door instructions up to point of positioning door onto tray. Refit connector post to wall side of door only. *NB- the second connector post is **not required** when fitting a side panel to the door, hence, this can be discarded.*

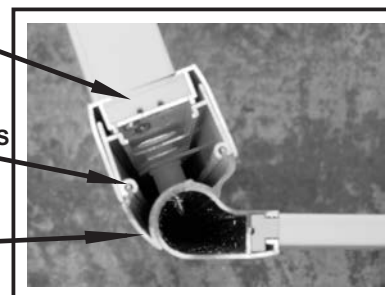
④ CONNECT PANEL TO DOOR, clip cornerpost of panel into wallpost of door. The two 'short legs' fit into the grooves of the compensating channel of wallpost. Ensure this is fully engaged along it's entire length.



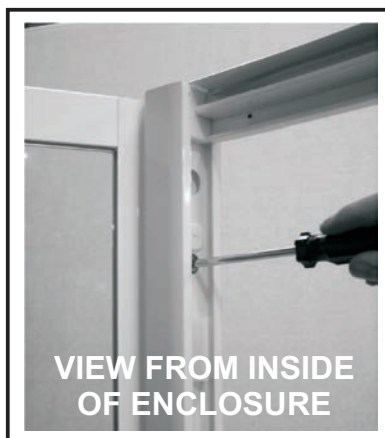
DOOR WALLPOST

CLIP INTO GROOVES OF WALLPOST

PANEL CORNERPOST



⑤ FIX PANEL TO DOOR, using three-No. 8's x 30mm long panhead screws provided, through wall post mouldings into pre-drilled holes in panel cornerpost. **Do not overtighten these screws.**



VIEW FROM INSIDE OF ENCLOSURE

⑥ OFFER UNIT ONTO TRAY, carefully lift unit onto tray to determine the position. Ensure the adjustment in door and panel will allow for this position: **15mm adj. on door at wall side, 15mm adj. on panel at wall side.**

TIP Hold side panel at each side to lift entire unit.

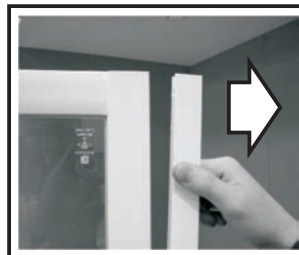
⑦ **SET DOOR FRAME LEVEL**, if necessary, (refer to door instructions).

⑧ **MARK POSITION**, of door and panel onto tray. (Refer, also, to door instructions).



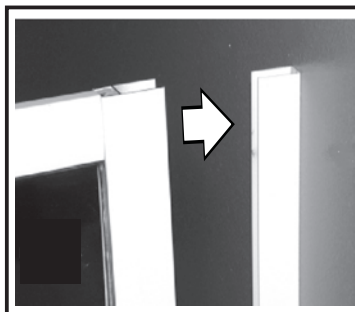
After marking, **carefully** remove unit from tray.

⑧ **REMOVE WALL CHANNEL**, (this sits with-in the wall side frame work and is labelled) and re-position on mark made on tray. Using spirit level to ensure channel is vertical, mark through 3 pre-drilled holes in channel.

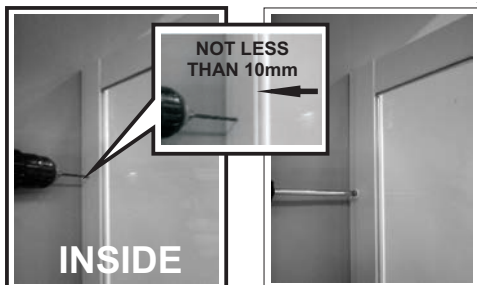


⑨ **DRILL HOLES** in wall using 7mm masonry drill and fit wall plugs supplied, or fixings suitable for the construction of your wall.
FIX WALL CHANNEL to wall using three-No.8's x 30mm long panhead screws provided. Refer to door instructions.

⑩ **REFIT SIDE PANEL** over wall channel. Using spirit level, ensure cornerpost is vertical in **both directions**, use adjustment at walls on panel and door to achieve this.



⑪ **SECURE SIDE PANEL** to wall channel. Using 3mm drill, drill holes through panel frame and into wall channel. Fix using two-No.6's x 12mm long panhead screws, screw cover washers and cover caps provided.



⑬ **SILICONE SEAL UNIT**, to walls and tray.



Silicone seal wall channel to wall on inside and outside



Silicone seal frame to tray and joints, as shown, on **OUTSIDE ONLY**

⑫ **FIT COVER CAPS**, using the relevant right or left handed caps. FIX WITH SCREW PROVIDED



IMPORTANT

Do not silicon seal on the inside of unit (except where shown). Sealing the side panel to the tray on the inside can result in leakage problems-please note that, in use, water can penetrate into the frame extrusions-*this has no detrimental effect to the product*-however, this water must be allowed to drain out of the extrusions to the inside.

Allow 24 hours for the silicon to cure before using