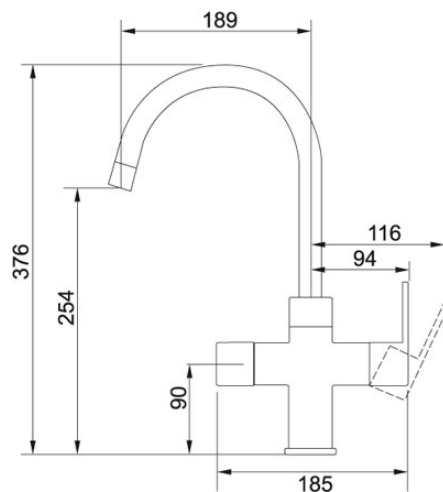


Stainless Steel | 119.0475.867

FAMILY : **Instant boiling water taps** | INSTALLATION TYPE : **Sink/Worktop** | INSTALLATION TYPE : **Sink/Worktop** | SERIE : **4-in-1 Tap** | FINISH : **Stainless Steel** | SERIE : **Minerva Electronic 4-in-1 Tap** | MODEL : **Minerva Electronic**



The electronically controlled Minerva 4-in-1 delivers boiling, warm or cold filtered water in an instant. Beautifully designed with a chrome J spout it features pan and jug filling modes, child safety function plus a filter warning light.

IMPORTANT

Please be aware of your water pressure before purchase. If your water pressure is too low, the installation of a pump should be investigated. If your pressure is too high, the inclusion of a pressure reducing valve (not supplied) in the system will be necessary.

TECHNICAL DATA

Version	Bi-Flow Spout
Height Overall	345.00 mm
Height to End of Spout	234.00 mm
Spout reach	230.00 mm
Base	Ø 50