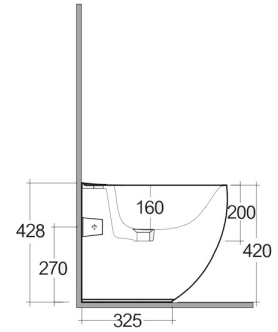
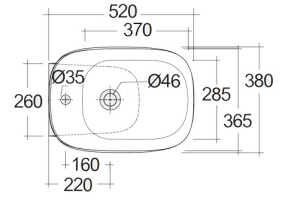


# RAK-ILLUSION-W/HIDDEN FIXATIONS

## Bidets | Back To Wall

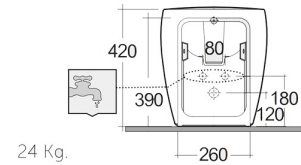
**RAK**  
CERAMICS



### TECHNICAL SPECIFICATIONS

Suite:	RAK-ILLUSION
Type:	Back To Wall
Dimensions:	520 x 380 mm
Weight:	24 Kg
Color:	Alpine White

Code	Name
ILLBD2015AWHA	RAK-ILLUSION-W/HIDDEN FIXATIONS



Dimensions: All dimensions in mm. Tolerance of vitreous china & fireclay items: ± 5% for below 200mm and ± 3% for above 200mm; for all other items tolerance ± 1%. Note: Due to a continuing development program to improve design and performance, the manufacturer reserves all rights to vary specifications without prior information. Please note accessories are for photographic use only.